



HOSPITAL GUIDE



Central Japan International Medical Center

Greetings from the Chair of the Board

Welcome to Central Japan International Medical Center.

As its name implies, Central Japan International Medical Center is located in the heart of Japan and is truly an international medical institution. As a surgeon dedicated to the mission of "All for the Benefit of the Patients", I have saved many patients. As the 99th International President of Lions Clubs International, I have visited many hospitals around the world and witnessed those who need support most through humanitarian services. I have put what

I have seen and learned all from my past experience and everything into this medical center.

We are committed to constantly investing in state-of-the-art medical equipment and facilities even before we moved to a different location where we became "Central Japan International Medical Center" in January 2022.

In April 2024, we opened the Proton Therapy Center and began treating patients with revolutionary equipment technologies.

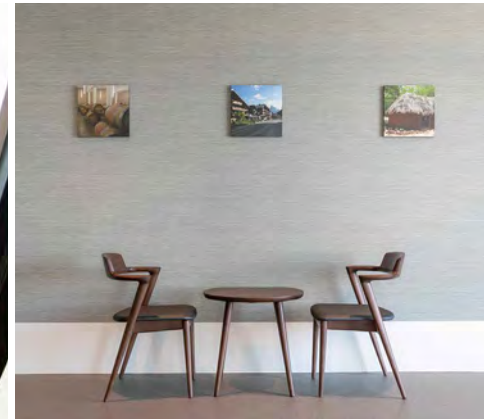
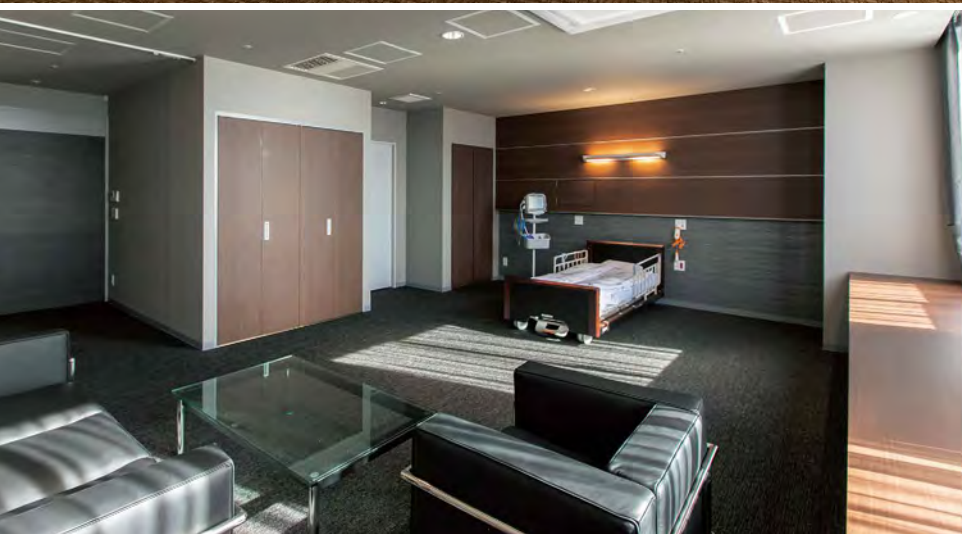
Manufactured by US based Varian Medical Systems Inc. which can bring a new pathway to care to people with cancer.

We take pride in the highest standards in every area of medicine, from highly qualified and trained staff who are passionate about "OMOTENASHI (Hospitality) spirit".

We are now ready and looking forward to serving patients around the globe and exceeding your expectations.

YAMADA Jitsuhiro, M.D., Ph.D.

Chairperson
Koseikai Social Medical Corporation



A Hotel-Like Hospital in the Heart of Japan

Located in the center of Japan, the hospital is easily accessed from most major cities in Japan, including Tokyo, Osaka, and Nagoya. We welcome you to the newly constructed luxurious space.

State-of-the-Art Medical Technology

In today's era of rapidly evolving medical technology, we provide world-class, state of the art facilities where our healthcare professionals will deliver optimal care, leading to better health outcomes for all.

Warm and Attentive Care from Our Dedicated Staff

Our attentive and caring staff speak your language. We make sure that your entire experience with our hospital is as pleasant and as stress-free as possible.

Here is where international patients can receive medical services.

We have made a new start as “Central Japan International Medical Center” in January 2022 under the mission of “All for the Benefit of the Patients”. The name “Central Japan International Medical Center” reflects our commitment to “To provide care that meets global quality standards”. To fulfill this mission, we have state-of-the-art facilities and most modern equipment, our highly skilled and trained staff to provide the highest level of medical care to our patients. We can provide comprehensive care in almost all phases of medical care from routine, periodic, preventative visits to comprehensive full medical treatment. We are now ready to serve our patients with the best possible healthcare.

Our Vision

All for the Benefit of the Patients

The patient always comes first. We are dedicated to patient care.

Our Values

1. We greet each patient in a warm and welcoming manner, demonstrate an interest in the patient and makes them feel important.
2. We strive to deliver high quality health services with compassion, dignity, and respect to all.
3. We will be an international leader in providing innovative, high-quality health care.
4. We provide excellence in health care 24/7 for the communities we serve.
5. We seek to promote a health-empowering community by engaging community partners and collaborating with primary care networks to deliver our patients the best possible care.
6. We keep ourselves well educated so that we can be by always furthering our education and skills.

Central Japan
International
Medical Center

Founder	Koseikai Social Medical Corporation	Name / Central Japan International Medical Center
	Chairperson YAMADA Jitsuhiro, M.D., Ph.D.	Address / 1-1 Kenkonomachi, Minokamo, Gifu
		Departments / 33
Administrator	Director SUGIYAMA Haruhito, M.D., Ph.D.	Beds / 502
		Operating Rooms / 11

List of Accreditation

- Local cancer alliance's clinical network hub
- Cancer genome medical cooperation hospital
- JMIP (Japan Medical Service Accreditation for International Patients) accredited hospital
- JIH (Japan International Hospitals) recommended hospital

Clinical Departments & Centers

Internal Medicine Specialties

Internal Medicine	General Internal Medicine	Respirology
Cardiology	Gastroenterology	Endocrinology and Metabolism
Nephrology	Hematology	Neurology

Surgical Specialties

General Surgery	Gastroenterological Surgery	Breast Surgery
Cardiovascular Surgery	Neurosurgery	Head and Neck Surgery
Respiratory Surgery	Orthopedic Surgery	Plastic Surgery
Urology	Dermatology	Ophthalmology
Otolaryngology	Obstetrics and Gynecology	Dentistry and Oral / Maxillofacial Surgery

Other Specialties

Pediatrics	Radiology	Radiation Oncology
Anesthesiology / Pain Clinic	Palliative Care Medicine	Diagnostic Pathology
Emergency Medicine	Psycho-Oncology	Rehabilitation Medicine

Advanced Specialized Care Centers

Heart Disease Center	Diabetes Center	Kidney Center
Joint Reconstruction Center	Spine Treatment Center	Stroke Center
Physical Rehabilitation Center		Endoscopy Center
Clinical Trials and Clinical Research Management Center		Diagnostic Pathology Center

Cancer Centers

Gastrointestinal Cancer Center	Lung Cancer Treatment Center
Prostate Cancer Center	Breast Cancer Treatment and Reconstruction Center
Head and Neck Cancer Center	Skin Cancer Center
Outpatient Chemotherapy Center	Cancer Genomics and Precision Oncology Center
Central Japan Cancer Genomics Research Laboratory	Proton Therapy Center

Emergency and Critical Care

Emergency Room (ER)	Intensive Care Unit (ICU)
Infectious Diseases Division	High Care Unit (HCU)

Anesthesiology and Pain Management

Palliative Care Center	Pain Center	Anesthesiology / Pain Clinic
------------------------	-------------	------------------------------

Health Maintenance and Promotion

Health Maintenance Center	Health Promotion Facility Club M
---------------------------	----------------------------------



Medical Examination

Standard Course (Comprehensive Checkups)

The purpose of the medical examination is not only to diagnose, but to prevent. By identifying lifestyle related risk factors patients leave the hospital with a renewed commitment to self-directed health management. Lifestyle-related diseases progress insidiously with few or no symptoms before damage is severe. Early detection of risk and increased awareness can significantly improve public health.

Test type	Test details	Targeted diseases/abnormalities
Medical consultation	Physician consultation	
Physical measurements	height, weight, standard weight, degree of obesity, BMI, body fat percentage, waist circumference	obesity, visceral fat obesity, etc.
Hearing test	1000Hz, 4000Hz	hearing loss, etc.
Ophthalmology tests	visual acuity, intraocular pressure, fundus (blood vessels and other aspects)	retinal hemorrhage, glaucoma, cataracts, and other eye diseases, vascular abnormalities (e.g., arteriosclerosis)
Cardiovascular tests	blood pressure, electrocardiogram (at rest)	heart disease (angina, myocardial infarction, arrhythmia), hypertension, etc.
Chest X-ray	cardiovascular, respiratory system	lung cancer, tuberculosis, emphysema, pneumonia, bronchial asthma, etc.
Respiratory tests	pulmonary function test	emphysema, bronchial asthma, etc.
Digestive system tests	gastrointestinal X-ray, fecal occult blood test	diseases of the esophagus, stomach, duodenum, colon (cancer, polyps, inflammation, etc.)
	Liver function test (total protein, albumin, A/G ratio, total bilirubin, GOT, GPT, γ-GTP, LDH, ALP, LAP, cholinesterase)	liver dysfunction, liver disease, cirrhosis, liver cancer, fatty liver, alcoholic liver disease, gallstones, hemolytic anemia, malignancies, etc.
	HBs antigen/antibody, HCV antibody, serum amylase	hepatitis B, hepatitis C, pancreatic cancer, pancreatitis, etc.
Abdominal ultrasound	liver, gallbladder, pancreas, kidneys, etc.	diseases of the gallbladder, liver, pancreas, kidneys, adrenal glands, spleen, abdominal aorta, etc.
Metabolism tests	fasting blood glucose, urine glucose, HbA1c, uric acid	diabetes, gout
Lipid profile	total cholesterol, LDL cholesterol, HDL cholesterol, non-HDL cholesterol, triglycerides	hyperlipidemia, obesity, fatty liver, arteriosclerosis, liver dysfunction, etc.
Inflammation marker	CRP	inflammation, bacterial infection, etc.
Rheumatoid factor	RF	collagen disease, rheumatoid arthritis, etc.
Hematology tests	red blood cells, hemoglobin, hematocrit, MCV, MCH, MCHC, platelets, white blood cells, neutrophils, lymphocytes, monocytes, eosinophils, basophils	anemia, polycythemia, infections, blood disorders, etc.
Kidney function & urinalysis	BUN, creatinine, eGFR, urine pH, ketones, proteinuria, hematuria, urobilinogen, sediment	kidney dysfunction, renal failure, nephritis, cystitis, etc.
Syphilis tests	RPR, TPHA	syphilis, etc.

Specialized Courses (Targeted Checkups)

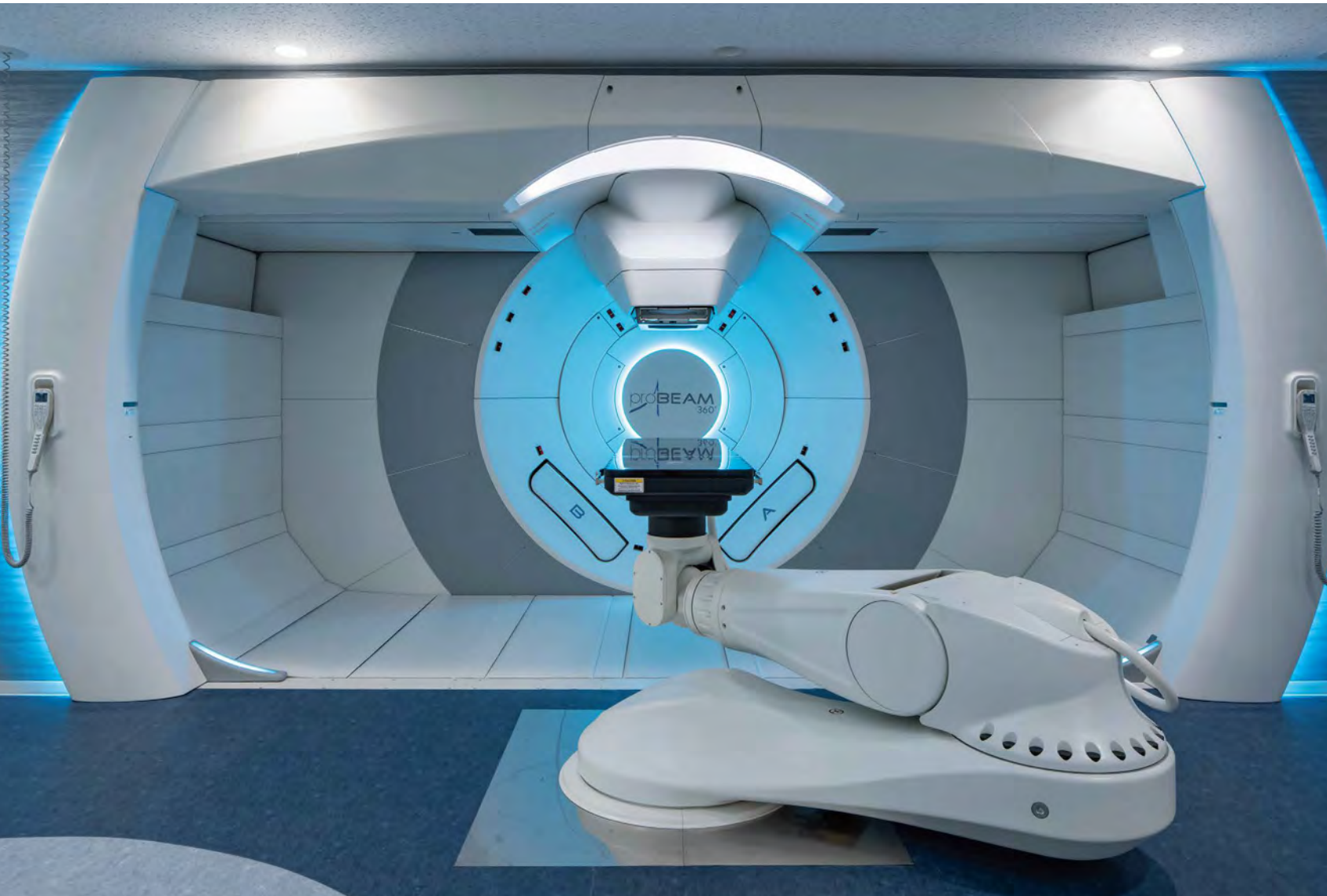
By focusing on detecting disease in targeted regions of the body, these courses offer greater precision than the standard medical examination.

Name of Test	Courses				
	Full-body Cancer Screening	ELMAMMO Full-body Cancer Screening for Women	Cardiovascular System Screening	Brain Screening (Standard)	Brain Screening (Special)
Medical interview	●	●	●	●	●
Consultation	●	●	●	●	●
Body measurement	●	●	●	●	●
Blood pressure	●	●	●	●	●
Urinalysis	●	●	●	●	●
Blood test	Biochemistry	●	●	●	●
	Lipids	●	●	●	●
	Glucose metabolism	●	●	●	●
	Blood profile	●	●	●	●
Other	●	●			●
Hearing				●	●
Vision				●	●
ECG			●	●	●
Fundus examination				●	●
Heart sonogram			●		
Chest X-ray			●		
Blood pressure/pulse check			●		
PET/CT (2 scanning sessions)	●	●			
Elmammo scan		●			
MRI/MRA scan (head & neck)				●	●
MRI scan (head)	●				
MRI scan (pelvis)	● (women only)	●			
Head SPECT scan					●
320-row CT			●		
Expectoration test	●	●			
Fecal occult blood reaction (2-day method)	●	●			
Mammography		● (optional)			
Breast sonogram		● (optional)			

Proton Therapy Center

Welcome to a New Era of Cancer Therapy

Central Japan International Medical Center opened a Proton Therapy Center with state-of-the-art “Varian ProBeam 360°” proton therapy system, the very first to introduce the system in Japan. Proton therapy is the latest innovation in cancer treatment capable of precisely target tumors with the maximum dose of radiation. While it’s noninvasive and extremely precise, you’ll experience fewer side effects.

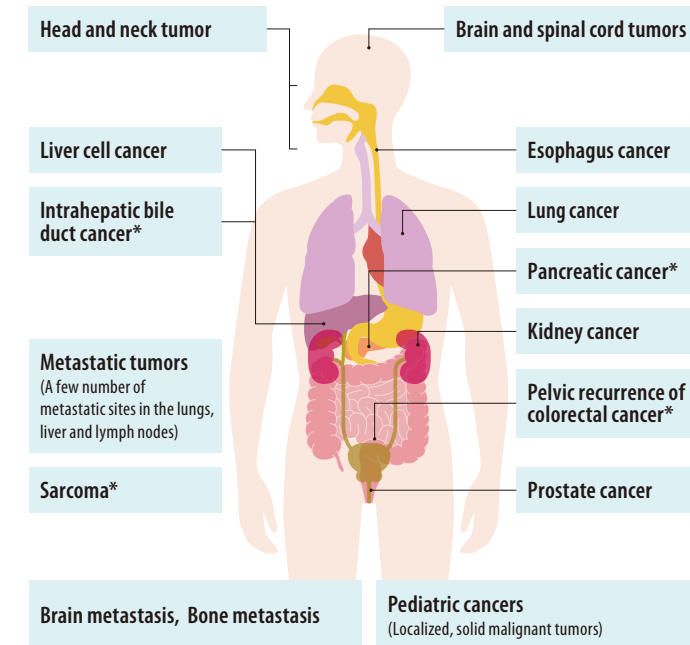


Varian ProBeam360°

We are the very first in Japan to install the world’s most advanced proton therapy system manufactured by US based Varian Medical Systems Inc. “Superconducting Cyclotron” is the most powerful particle accelerator available today to treat cancer, advantages include faster treatment times and 360-degree gantry rotates around the patient. Side effects common after radiation therapy are minimized and surrounding healthy tissue and organs are intact since the radiation only targets the tumor.



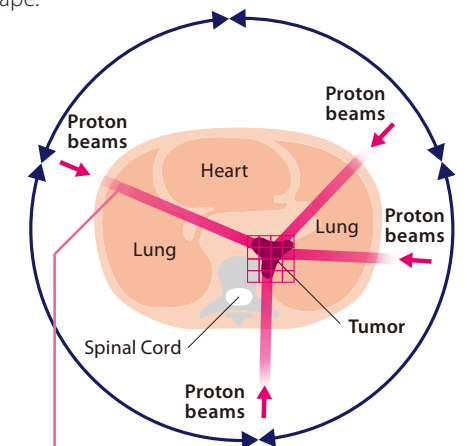
Treatable Tumors with Proton Therapy



*Limited to the tumor location where not treatable with surgery. Please contact us for any further details.

Intensity Modulated Proton Therapy (Pencil beam scanning technology)

Only 4 millimeters wide, pencil beam scanning can be customized to target a patient’s unique tumor size and shape.



Gantry machine rotates 360° around the patient which enables treating the tumor from several angles (3-dimensional irradiation).



FUWA Nobukazu, M.D., Ph.D.
Director of the Proton Therapy Center

Welcome from the Director of the Proton Therapy Center

We are excited to offer cancer patients with proton therapy which is less invasive and extremely precise. Protons can treat a variety of cancer cases that are located in areas of the body that were difficult to treat with the traditional radiation therapy. With our new facility, our mission is to help our patients fight cancer and achieve optimal result.

PROFILE

Dr. FUWA is a graduate of Mie University Hospital school of Medicine in 1981. He also serves as the head of the Radiation Oncology department. Work History: Assistant director of Aichi Cancer Center, Director of Southern TOHOKU Proton Therapy Center, director of Hyogo Ion Beam Medical Center. Dr. FUWA joined the Central Japan International Medical Center faculty in 2021. He is a Radiation Oncologist and a leading expert and pioneer in the Radiation Oncology.

Superconducting Cyclotron



Rotating Gantry



Diagnostic Imaging

PET/CT

Discovery Mi-x

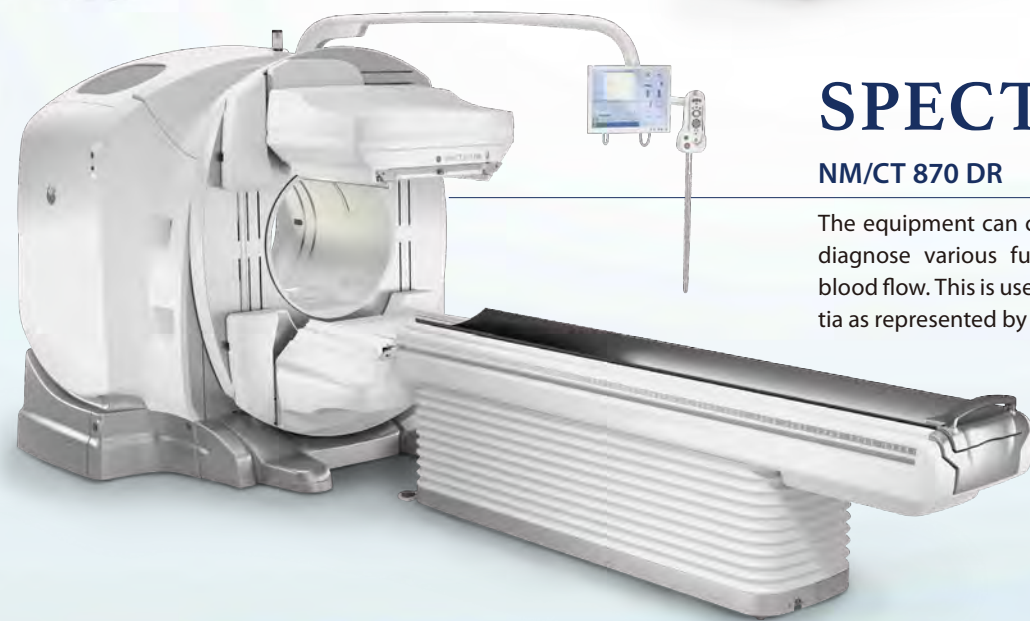
PET visualizes cancer and CT obtains position information. These have been combined to form one examination machine. Since the results of these two tests overlap, a more precise diagnostic image is possible, which is useful in the early detection of minute cancer.



SPECT/CT

NM/CT 870 DR

The equipment can combine SPECT with CT in order to diagnose various functions such as metabolism and blood flow. This is useful in the early detection of dementia as represented by Alzheimer's.



320-row CT

Aquilion ONE GENESIS

An image with a width up to 16 cm can be captured in one shot only in 0.35 seconds. It demonstrates ability in testing cardiac diseases such as angina pectoris, myocardial infarction, etc.



MRI

SIGNA Artist 1.5T

The equipment uses magnetism and radio waves, and inside the body can be visualized. Since there is no exposure to X-rays (radiation), a person can receive an examination with peace of mind. By visualizing various tissues, effective early detection of adult diseases is possible.



Elmammo

PET device dedicated for breast imaging

The world's first PET scanner exclusive for the breast has been introduced. Since the breast is not pressed, the examination is painless. The women-friendly device can clearly visualize small, hard-to-find breast cancers.



Cancer Genomics and Precision Oncology Center

We continually develop and introduce new technologies to accelerate discoveries in cancer genomics and apply these discoveries to improve tailored cancer patient care. In 2017, we opened the "Cancer Genomics Clinic" and in partnership with the Genome Medicine Unit of the Tumor Center at Keio University Hospital, we have become the third in Japan to introduce the comprehensive genomic profiling which allow us to simultaneously detect of all classes of genomic alterations across hundreds of genes with just one test. In 2018, the Ministry of Health, Labor and Welfare (MHLW) designated us as a "Cancer Genomic Medicine Partner Facility".

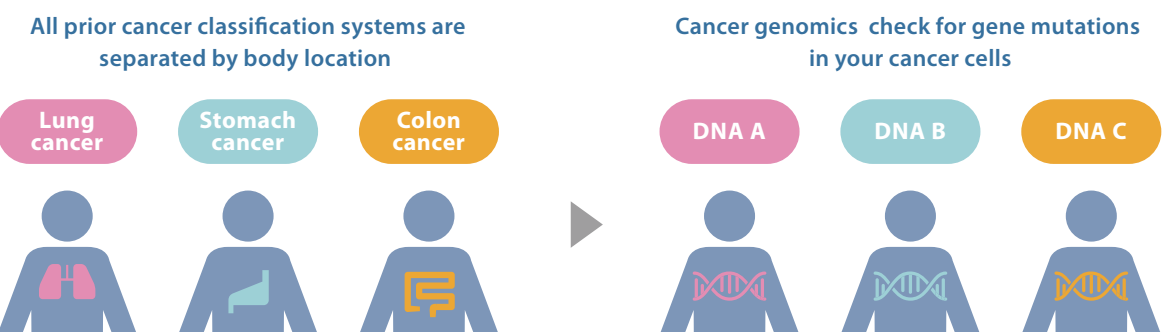
How Do Cancers Develop?

Gene mutations in cancer cells interfere with the normal growth in a cell and can cause it to grow out uncontrollably or does not die when it should. Cancer can continue to grow because cancer cells act differently than normal cells and as a tumor gets bigger, cancer cells can spread to surrounding tissues and organs by pushing on normal tissue beside the tumor.



What is Cancer Genomics?

Genomic testing looks for gene mutations or harmful changes anywhere in the genetic code. Some genomic variants within the cancer genome can be used to select a treatment for a particular patient's cancer that best matches, or targets specific genetic abnormalities which means more effective treatments for their cancer.



State-of-the-Art Facilities and Cutting-Edge Technologies



Intensity Modulated Radiation Therapy (IMRT)

IMRT is the most advanced form of external beam radiation therapy available for cancer treatment today and precisely shaped beams of radiation are directed at a solid tumor. The precise control and flexibility of IMRT minimizes the amount of radiation going to surrounding healthy tissue. Less time on the table, which helps to minimize side effects. IMRT is used most often to treat prostate cancer or brain tumor.

Hybrid Operating Room

A hybrid operating room, which integrates imaging technology and surgical equipment to support a team of experts. This new suite also allows surgeons to perform procedures that are currently done open, in an endovascular (through the blood vessels) fashion instead. Many procedures are well-suited for hybrid ORs for the treatment of cardiovascular issues like coronary artery disease, valve replacement or repair.



Angiography Suites

We have four angiography suites, and they can provide three-dimensional imaging during complex interventions with the aim of increasing the accuracy and safety of procedures. The Angiography suite is used for patients undergoing cardiology and vascular procedures including arrhythmia treatment (catheter ablation), endovascular treatment, cerebrovascular diseases and liver cancer.



Da Vinci

The Da Vinci Surgical System can deliver highly magnified, 3D high-definition views of the nerves and blood vessels of the surgical field. The Da Vinci System is designed to seamlessly translate the surgeon's hand movements into smaller, more precise movements by using tiny, wristed instruments that can bend and rotate far greater than the human hands. The Da Vinci System enables surgeons to perform even the most complex and delicate procedures through very small, incisions.

Expansive Network of Partner Facilities



Chubu Neurorehabilitation Hospital

We provide a specialized medical care for those who have sustained a chronic neurological conditions and we are dedicated to helping people make a comeback. Neurorehabilitation is available for patients who survive a stroke or traumatic brain injury, who are usually continue to suffer from permanent motor disorders. We have a state-of-the-art scanner, with particular focus on acquisition of neuroimaging data as well.



Club M

Club M is a "Certified health promotion facility". Medical fitness is a clinical approach to fitness that uses medically integrated exercise programming necessary to efficiently and effectively assist individuals dealing with medical conditions and help promote health and wellness. Club M utilizes an individual's unique medical profile to design a safe and medically supervised fitness program to prevent or reverse lifestyle diseases to achieve optimal health.



Jikeikai Social Welfare Corporation

We provide a wide variety of health and personal care services by operating general nursing care, long-term care and support facilities and care homes in the field of nursing care. We also provide in home nursing care services and support.



Central Japan International Medical College

We educate and train high quality, proficient nurses who can be a caring nursing professional and who can make an impact in their communities. Our students become skilled and caring professionals who are highly respected, skilled and compassionate.



Mount Fuji



Asakusa



Shirakawa-go



Takayama Festival

Access Guide

The Center of Japan

Central Japan International Medical Center is located in the center of Japan and is conveniently accessible from major airports and cities.

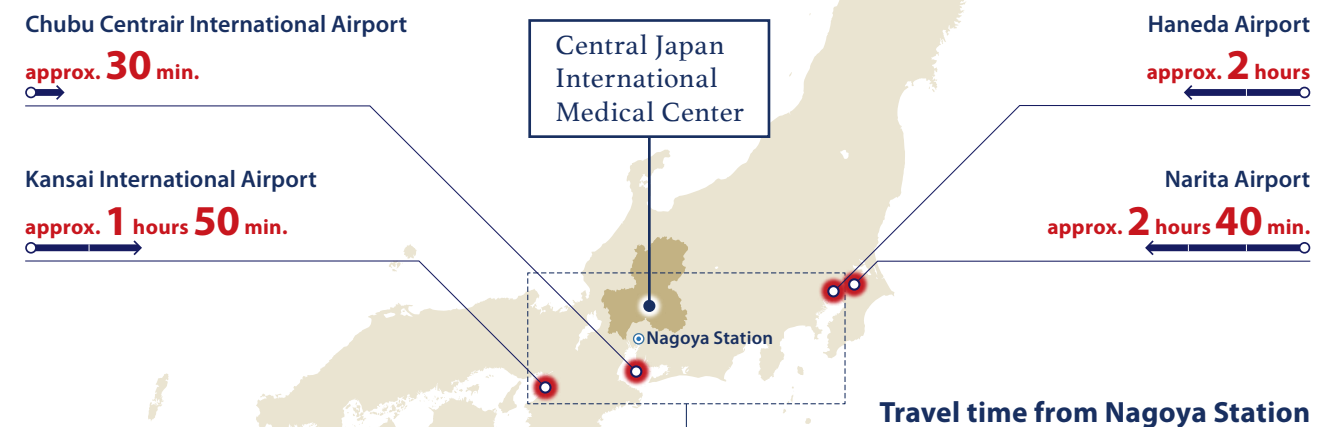
Travel time from major airports (From the station nearest the airport to Nagoya Station)

Chubu Centrair International Airport
approx. **30 min.**

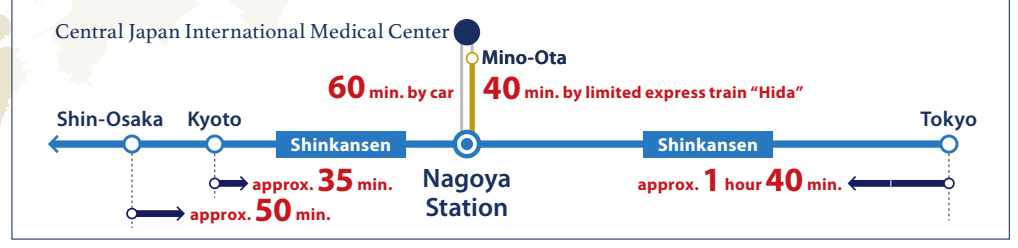
Kansai International Airport
approx. **1 hours 50 min.**

Haneda Airport
approx. **2 hours**

Narita Airport
approx. **2 hours 40 min.**



Travel time from Nagoya Station



Tourist Spots

around Central Japan International Medical Center

Nestled in the heart of Japan, where modern city meets spectacular mountains and breathtaking nature, our location stands as one of Japan's most captivating destinations. With an elevation of 3,000 m above sea level, you can enjoy Japan's unique seasonal beauty in nature, such as spring cherry blossoms and autumn colorful foliage for over extended periods of time. Blessed with its mountains and its crystal-clear waterways, this region is home to countless roots of Japanese culture. It is a place where seamless blend of traditional Japanese rich culture, heritage and craftsmanship and modernity coexists.



Mino
Mino Washi Japanese Papermaking



Seki
Traditional forging of Japanese swords



Kinkaku-Ji Temple



Nagoya



Nagaragawa-Ukai
Gifu Cormorant Fishing on the Nagara River



Inuyama Castle



Koseikai Social Medical Corporation

Central Japan International Medical Center

1-1 Kenkonomachi, Minokamo, Gifu 505-8510

Phone +81-574-66-1100 / Fax +81-574-66-1661

<https://cjimc-hp.jp>



as of October 2024